

# RollerMouse® Free3

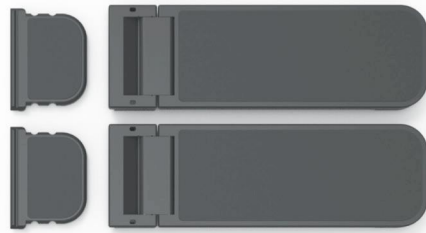
## User Guide



contour 



4



2

3

### Box contents

- 1. RollerMouse Free3
- 2. Two short keyboard risers
- 3. Two long keyboard risers
- 4. User Guide

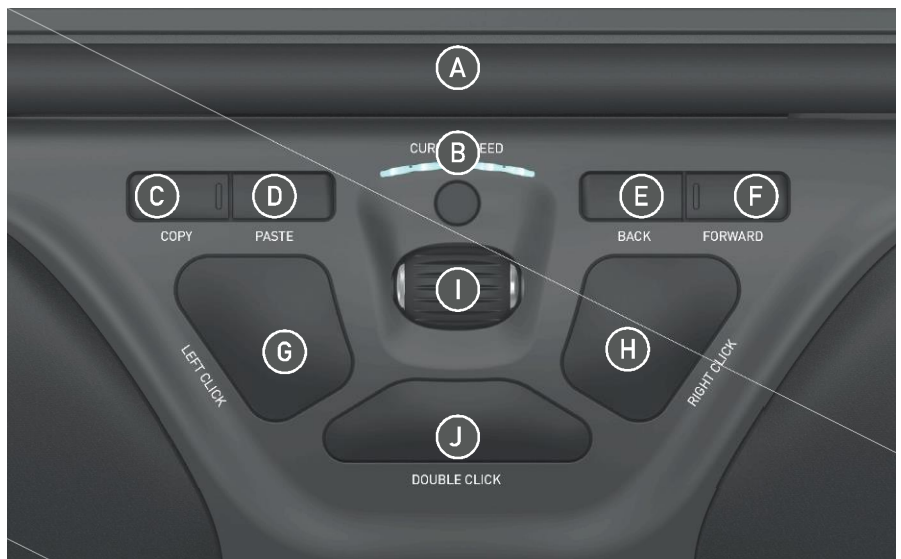


1

## RollerMouse functions

- A. Rollerbar
- B. Cursor speed adjustment
- C. Copy
- D. Paste
- E. Back
- F. Forward
- G. Left-click
- H. Right-click
- I. Scroll wheel
- J. "One touch" double-click

For additional mouse features and specific Mac settings please download our driver at [contourdesign.com](http://contourdesign.com).



## Keyboard positioning

Before plugging in the unit take a moment to check the height and angle of your keyboard, and find the arrangement that's **most** comfortable for you. Use the risers to achieve the correct angle and height regardless of the type of keyboard you are using. The spacebar on your keyboard should come just above your rollerbar. To achieve a proper ergonomic position, the front edge of the keyboard should be as close to the rollerbar as possible.

The Balance Keyboard is a perfect option for the Free3. Designed specifically for the RollerMouse, the Balance Keyboard sits level with the rollerbar and can be easily adjusted to a positive, neutral, or negative tilt.



Positive tilt



Negative tilt



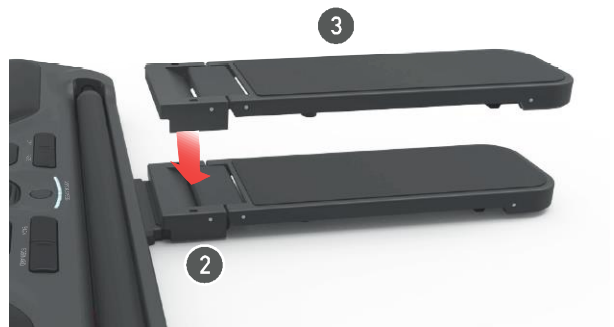
Neutral tilt

### Inserting the keyboard risers

Fit the end of the riser **2** into the slot on the back of the RollerMouse Free3.



Line up the grooves of the short and long risers **2** and **3** then press the two parts together until you hear them snap into place.



### Connecting to a computer

Plug the RollerMouse Free3 USB cable into the computer's USB port. Allow your computer a few seconds to automatically install.



### Click Force Tension Adjustment

Adjust the click force of the rollerbar by using the tension adjustment button located on the bottom right side of the mouse.



## Using the rollerbar

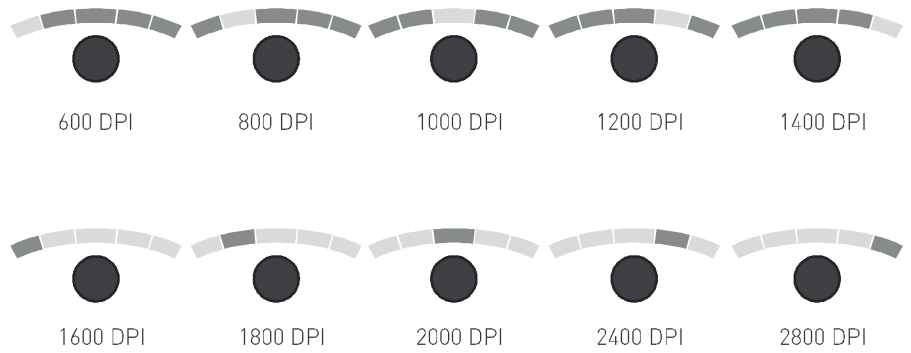
The rollerbar **A** provides two functions:

- Pressing down on the rollerbar performs a left click.
- Moving the rollerbar from side to side and up and down performs cursor movement.



## Change cursor speed

Press button **B** to change cursor speed. There are ten speed selections which range from slow (600 DPI) to fast (2800 DPI). Speed can be identified by the LED lights as shown.

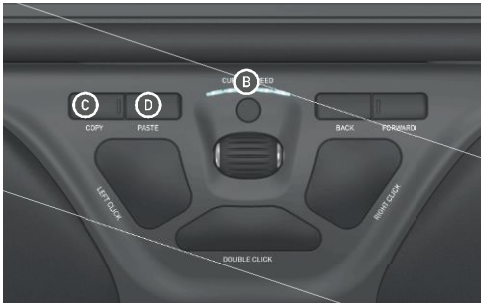




## User settings

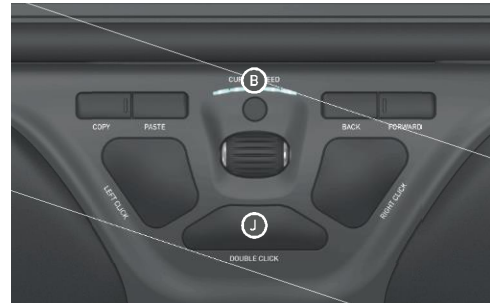
Adjust the user settings to best fit your operating system. Use the following key commands to switch settings. Hold button combinations for two seconds until LED lights flash to confirm.

- B** + **C** : PC Mode [Control+C, Control+V]
- B** + **D** : Mac Mode [Command+C, Command+V]



## Changing the 'Double' Click Button to Middle Button function

To change button **J** from a double click function to a middle button function, hold buttons **B** and **J** for two seconds until LED lights flashes to confirm. Repeating this process will revert back to double click function.



For more information please visit:  
[www.contourdesign.com](http://www.contourdesign.com)

Contour Design, Inc.  
10 Industrial Drive  
Windham, New Hampshire 03087, USA  
Phone: (603) 893-4556  
Email: [ergoinfo@contourdesign.com](mailto:ergoinfo@contourdesign.com)

Contour Design Nordic A/S  
International House  
Center Boulevard 5  
2300 Copenhagen S., Denmark  
Phone: +45 32 46 11 20  
Email: [info@contour-design.com](mailto:info@contour-design.com)

Tested to comply with FCC standards



contour 