



# Cirque GlidePoint Desktop Trackpads

Smart Cat Pro, Smart Cat, and Easy Cat

## Installation Guide

Document Version 8.1

AUGUST 2013



This document describes all versions of the Cirque GlidePoint Cat family of trackpads; in other words, Smart Cat Pro®, Smart Cat®, and Easy Cat®.

**Note:** *The GlidePoint® driver for Cat trackpad products is designed to work with Microsoft® Windows® operating system PCs. The Apple® Macintosh® operating system is not supported. The Cirque Smart Cat and Easy Cat are compatible with Macintosh PCs as a generic mouse but are used at customer discretion.*

## Documentation Provided “As Is”

The contents of this manual are not intended to and do not constitute a warranty of any sort. Cirque Corporation specifically disclaims any implied warranties of merchantability or fitness for any particular purpose resulting from this manual. Cirque Corporation reserves the right to revise and make changes to this manual (and to the Cirque GlidePoint® product and software) from time to time without obligation to notify any person of, or to provide a person with, such revisions or changes.

## Document Version

Date	Current Version	Description
JULY 2013	8.0	Document updated to support Windows 8 gestures.
AUGUST 2013	8.1	Document updated to support Windows 8.1.

## Copyright and Patent Information

This document is the sole property of Cirque Corporation. The information contained within is proprietary and may not be reproduced or disclosed to third parties without the prior written consent of Cirque Corporation.

**Note to Purchasers:** All specifications subject to change without notice. Cirque shall not be liable for any damages whether non-specified, direct, indirect, special, incidental or consequential (including downtime, loss of profit or goodwill) regardless of the legal theory asserted.

Cirque, the Cirque logo, GlidePoint, the GlidePoint logo, and GlideExtend are trademarks of Cirque Corporation. All other brand names or trademarks are the property of their respective owners.

GlidePoint and GlidePoint Technology are protected under U.S. Patents # 5,565,658; 5,757,368; 5,861,875; 6,222,528; 5,767,457; 6,473,069; 6,730,863; 6,262,717; 6,639,586; 7,151,528; 7,808,487; 7,394,453; 7,306,144; 7,564,449; 7,817,145; 8,284,166, 8,368,667, 8,456,427, and other U.S. and International patents pending.

# Table of Contents

---

<b>Introduction</b> .....	<b>4</b>
<b>Installation</b> .....	<b>5</b>
Hardware Requirements.....	5
Software Requirements .....	5
Installing Your Trackpad .....	7
Installing the Cirque GlidePoint Driver Software .....	8
<b>Using Your Cirque GlidePoint Trackpad</b> .....	<b>11</b>
<b>Advanced Features</b> .....	<b>12</b>
Product Features.....	12
Buttons.....	13
Scroll Features .....	13
Gestures .....	13
Windows 8 Gestures.....	14
<b>Customizing Your Trackpad Features in All Models</b> .....	<b>15</b>
Using the GlidePoint Control Center .....	15
<b>Customer Support Information</b> .....	<b>16</b>
Troubleshooting.....	16
Frequently Asked Questions.....	16
Customer Service Assistance.....	18
<b>Contact Information</b> .....	<b>19</b>
Part Ordering Information.....	19

# Introduction

---

This document describes how to install and use your new trackpad. We hope you enjoy using your Cirque Smart Cat Pro, Cirque Smart Cat, or Cirque Easy Cat.



Figure 1. The Cirque GlidePoint Desktop Trackpads: Smart Cat Pro, Smart Cat, and Easy Cat, Respectively

Please take a moment to fill out the following information for your future reference. This information will be helpful if you should need to call Cirque's technical support.

**Model Number** \_\_\_\_\_

**Serial Number** \_\_\_\_\_

**Date of Purchase** \_\_\_\_\_

**Where Purchased** \_\_\_\_\_

**Windows Version**  Win 8.1  Win 8  Win 7  Vista  XP

**Type of Connection**  USB  PS/2

**Note:** Please keep a copy of your dated sales receipt.

# Installation

---

Cirque's GlidePoint trackpads operate as a standard mouse and have similar hardware and software requirements. The trackpad has advanced features when the GlidePoint driver is installed.

## Hardware Requirements

### Windows PC

The only hardware requirement for Cirque desktop trackpads is the appropriate connection.

- **USB:** The USB versions of the desktop trackpads require an available USB port.
- **PS/2:** The PS/2 versions require a PC with an available PS/2 mouse port.

**Note:** *Cirque trackpads that were designed as PS/2 devices cannot be converted to USB. In the same sense, USB trackpads cannot be converted to PS/2 devices.*

### Macintosh

Cirque does not provide a driver for the Macintosh operating system. However, Cirque USB trackpads are Macintosh compatible as a generic mouse. If you are going to use the trackpads on a Macintosh PC, Cirque recommends the following trackpads:

- USB Cirque Easy Cat (GP160U-xxxx).
- USB Cirque Smart Cat (GP410U-xxxx).

An available USB port is required for either trackpad.

**Note:** *Cirque USB trackpads cannot be adapted to ADB, PS/2, or serial port connections. They are specifically designed for USB.*

## Software Requirements

### Windows

Cirque desktop trackpads are designed to be compatible with all Microsoft Windows operating systems. Some advanced features are only available with the latest version of the GlidePoint driver. The driver's current version is compatible with Windows XP, Vista, Windows 7, Windows 8, and Windows 8.1 operating systems.

### Macintosh

The USB Cirque Easy Cat and the USB Cirque Smart Cat may work as a generic mouse.

- Mac OS 8.5 or later is required for both of these trackpads.
- Mac OS X or later is required for the vertical scrolling feature. Otherwise, third-party driver software is required.

**CAUTION:** Cirque does not support Macintosh or third-party software and is not responsible for any problems related to or caused by the third-party software.

## Cirque Driver

The Cirque GlidePoint driver adds additional features and cursor control to the trackpad. Some advanced features are only available with the latest version of the GlidePoint driver.

The GlidePoint driver is only available for Windows operating systems. Check your operating system and connection type in [Table 1](#) to determine the GlidePoint driver software version you will need.

Table 1. *GlidePoint Driver Software Versions*

Operating System	USB - PS/2
Microsoft Windows XP, Vista, Windows 7, Windows 8, and 8.1	Version 3.7.1
Microsoft Windows 2000	Version 3.3.2
Microsoft Windows 98	Version 2.6
Microsoft Windows 95/NT4	Version 1.08

**Note:** Driver version 3.7.1 is available on the CD included with your trackpad and on Cirque's Web page. Older versions of the driver are available online at [www.cirque.com](http://www.cirque.com). If you cannot find the version for your trackpad, contact Cirque's Technical Support department. (For more information, see [page 16](#).)

## Installing Your Trackpad

This section will describe how to connect the trackpad to your computer. Follow the steps for your trackpad's connection.

### USB - PC

Follow these steps to connect the trackpad to your PC's USB port:

1. Turn your computer on and start Windows.
2. Connect the USB connector to your computer's USB port. You should see the "New Hardware Found" dialog box.
3. Follow the prompts to install a standard HID compliant mouse. (If prompted, insert your Windows OS CD.)
4. Test the trackpad; it should operate like a standard mouse with your existing drivers.



### USB - Macintosh - *Cirque Smart Cat and Easy Cat Only*

Follow these steps to connect the trackpad to your Macintosh's USB port:

1. Turn on your computer.
2. Connect the USB connector to your computer's USB port. Your Macintosh computer should detect the trackpad immediately, once it is connected.
3. Test the trackpad; it should operate like a standard mouse.



**Note** *The Cirque Smart Cat Pro will not function as it is designed on the Macintosh operating system.*

**CAUTION:** Cirque does not support Macintosh or third-party software and is not responsible for any problems related to or caused by the third-party software.

### PS/2

Follow these steps to connect the trackpad to your PC's PS/2 port:

1. Turn off your computer.
2. Attach the PS/2 connector to the PS/2 mouse port on your computer.



**Note** *Because the mouse and keyboard PS/2 ports may appear identical, look for an icon or description next to each port on your computer to identify which port to use.*

3. Turn on your computer and start Windows.
4. Select the **Cancel** button if you see the "New Hardware Found" dialog box after Windows starts.
5. Test the trackpad; it should operate like a standard mouse with your existing drivers.

## Installing the Cirque GlidePoint Driver Software

Cirque's GlidePoint® trackpads operate as a standard mouse on a Windows or Macintosh PC and require no additional software for basic functions. You can click (tap), right-click (corner-tap), highlight, and drag using the standard mouse drivers on your computer. Also available is the Glide Extend virtual edge extender and the scroll wheel (or mouse wheel) feature.

For PCs with Windows XP, Vista, 7, 8, or 8.1 installed, Cirque offers the GlidePoint driver software as an addition that enhances the functionality of the trackpad, allowing customers to configure pad performance and customize advanced features; for example, advanced scroll, zoom, and gesture capabilities.

This section describes how to install the GlidePoint driver software that is on your Cirque GlidePoint software CD or available by download from [www.cirque.com](http://www.cirque.com).

Follow these steps to install the GlidePoint driver:

1. Insert the Cirque GlidePoint software CD into your CD-ROM drive.  
If the Windows Installer does not automatically start, click the **Start** menu and enter “**Run**” in the text field. Type D:\splash.exe (where “D” is the drive letter of your CD-ROM).  
The Menu dialog will then appear.
2. Select the Install GlidePoint Driver hyperlink identified in [Figure 2](#) below.

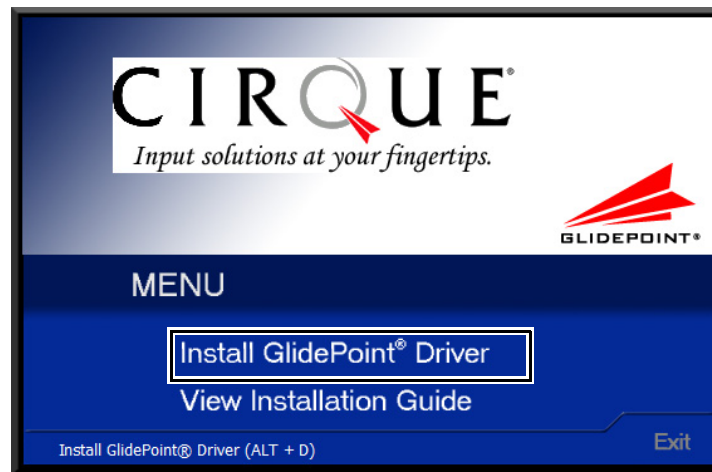


Figure 2. Cirque Menu Dialog

The Installation Welcome screen will then appear ([Figure 3 on page 9](#)).



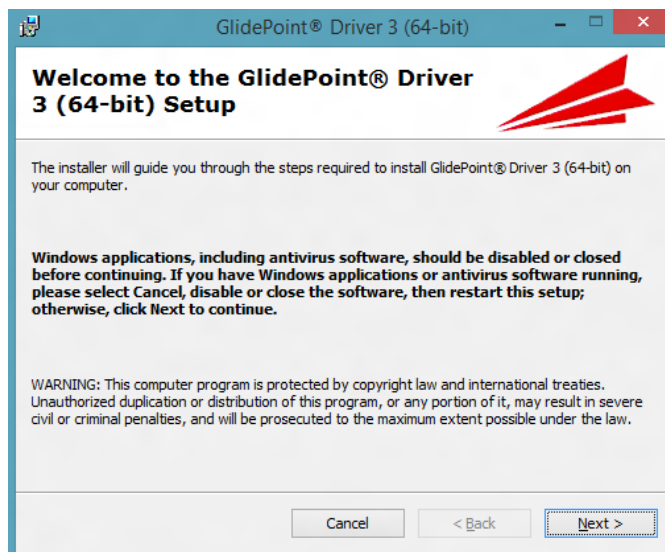


Figure 3. The Installation Welcome Screen

3. Click the **Next>** button and follow the prompts as they appear on your screen. Cirque recommends that you use the default settings.

You will need to accept the license agreement.



Figure 4. The End-User License Agreement

4. Choose the appropriate driver for the trackpad.

**Note:** You can choose to install both USB and PS/2 at the same time.

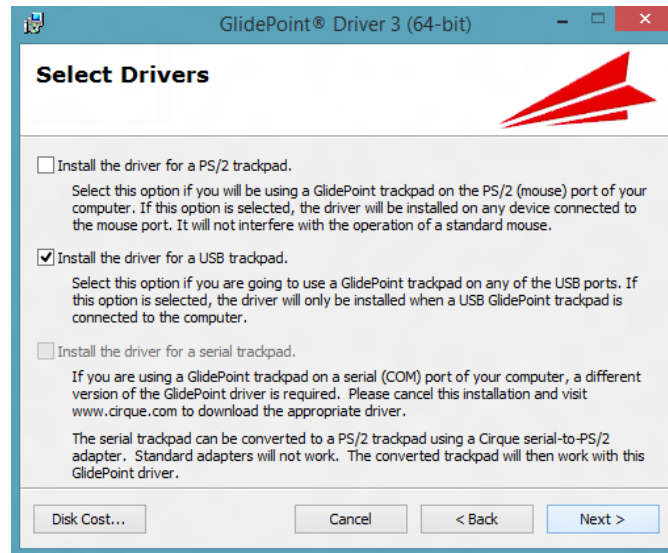


Figure 5. The Select Drivers Screen

5. Restart your computer if prompted.
6. Open the GlidePoint Control Center and adjust the trackpad settings to match your needs. (For more information on customizing your trackpad, see *Customizing Your Trackpad Features in All Models* on page 15.)

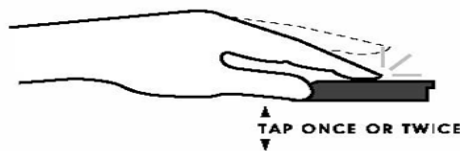
# Using Your Cirque GlidePoint Trackpad

It may take a short time to become familiar with the operation of your trackpad. Unlike the mouse or trackball, Cirque GlidePoint trackpads require little arm and wrist motion and no finger pressure. You may soon find that using your finger is a more natural and intuitive way to control your computer. Simply glide your finger across the surface of the pad to move the cursor and tap your finger to “click.” It is that easy!

## Trackpad Functionality

This section describes how to use common “mouse functions” on your trackpad.

- To click, lightly and quickly tap the surface of the pad once, or press the left button once.
- To double-click, tap twice on the pad or click the left button twice. Remember, the trackpad responds to a very light, crisp tap.



- **To right-click for sub-menus:** Tap the Corner Tap Zone area in the upper right corner of the trackpad or click the right button once.

**Note:** You may use a single tap of two fingers for a right click.

- **To drag, draw or highlight:** Double-tap rapidly and hold your finger down on the second tap, then glide to move. You may also hold the left button as you glide your finger.



- **To scroll:** Place your finger on the right edge and then glide up or down on the trackpad.

## GlideExtend

To drag further than the pad surface, lift and reposition your finger after reaching the textured edge. GlideExtend<sup>®</sup> will virtually eliminate the edge of the pad while you drag. In other words, if you are dragging an item and you reach the textured edge, GlideExtend will hold the drag function active for three seconds while you reposition and complete the drag. To shut off GlideExtend earlier than three seconds, simply tap or click a button.

# Advanced Features

Your Cirque trackpad represents the latest in capacitive touch technology. All Cirque desktop trackpads are designed to give you the highest level of performance and include advanced features that are not available from a standard mouse.

## Product Features

Cirque's GlidePoint driver enhances the functionality of the trackpad, allowing you to configure pad performance and customize advanced features. A summary of the available features is provided in [Table 2](#).

Table 2. Summary of Product Features

Features	Easy Cat®	Smart Cat®	Smart Cat Pro®
<b>Standard Features</b>			
Middle mouse button		X	X
Vertical scroll	X	X	X
Left / Right mouse buttons	X	X	X
Taps	X	X	X
Tap & Drag	X	X	X
<b>Advanced Features (Advanced features that require the Cirque driver software)</b>			
Trackpad rotation	X	X	X
Tapping control	X	X	X
Cursor movement control	X	X	X
Programmable mechanical buttons	2	3	3
Programmable tap zones	1	1	1
Programmable hot buttons	0	0	4
<b>Trackpad Scrolling (Advanced features that require the Cirque driver software)</b>			
Horizontal scroll	X	X	X
Vertical scroll	X	X	X
Power scroll®	X	X	X
CirQular scroll™	X	X	X
Wheel Mouse scroll	X	X	X
Compatible scroll	X	X	X
Zoom control	X	X	X
Back / Forward page control	X	X	X
<b>Multi-Finger Gestures (Advanced features that require the Cirque driver software)</b>			
Rotate gesture	X	X	X
Pinch / Zoom gesture	X	X	X
2-Finger Pan gesture	X	X	X
3-Finger Flick gesture	X	X	X
2-Finger Tap	X	X	X
<b>Windows 8 Gestures (Only available with Microsoft Windows 8 and later)</b>			
Right edge swipe	X	X	X
Top edge swipe	X	X	X
Left edge swipe	X	X	X

For more information on customizing your trackpad, see *How can I customize my trackpad settings?* on page 16.

## Buttons

Trackpad buttons and tap zones can be programmed to launch applications, open files, or execute specific Windows functions. All desktop trackpads include a tap zone and mechanical buttons. The Cirque Smart Cat Pro has four additional programmable hot buttons (labeled A through D) on the left of the trackpad surface.

## Scroll Features

### Scrolling Horizontally & Vertically

Scrolling allows you to move around in a document; this is similar to clicking on the scroll arrows or using the **Page Up** or **Page Down** keys on your keyboard. This feature is available in all models.

### Zoom In or Zoom Out

This option allows you to increase or decrease the view size of your document in most applications. This feature is available in all models.

### Back / Forward Page Control

You can use Cirque's back/forward feature to activate the back and forward controls of various applications and Web browsers; such as Microsoft® Internet Explorer®, Mozilla Firefox®, and Google Chrome®. This feature is available in all models.

## Gestures

### Rotate Gesture

Place two fingers on the trackpad and then slide one of your fingers in an arc around the other.

- The sliding does not have to be a perfect arc, but a curved motion improves performance.
- With the first finger still planted, the second finger can lift and slide again to rotate again.

This command may not work with all applications.

### Pinch / Zoom Gesture

While in contact with the trackpad, pinching two fingers closer together or spreading them apart will cause the display to zoom out or zoom in, respectively. This command may not work with all applications.

### 2-Finger Pan Gesture

While in contact with the trackpad, moving two fingers up and down or left and right will initiate a vertical or horizontal scroll in the direction the fingers are moving. This command may not work with all applications.

### 3-Finger Flick Gesture

Contact the trackpad with three fingers and immediately flick them in the desired direction to initiate the action assigned in the 3-Finger Flick drop down lists. Swipe or “flick” three fingers on the trackpad and then lift off in the preferred direction. The action selected in the Up, Down, Left, or Right drop-down lists will be performed.

### 2-Finger Tap

This option allows you to “right click” using a single tap with two fingers. Tap once with two fingers on the trackpad surface; the right-click menu should appear.

## Windows 8 Gestures

**Note:** *Windows 8 gestures are only available to Windows 8 and later users.*

### Right Edge Swipe

Place your finger on the right bezel edge of trackpad (outside the sensitive area). Swipe left into the sensitive area and then lift the finger off the trackpad. The Charm bar will then appear. This gesture may be used at any time.

### Top Edge Swipe

Place your finger on the top bezel edge of trackpad (outside the sensitive area). Swipe down into the sensitive area and then lift the finger off the trackpad to toggle the App commands. You can then tap the preferred command.

### Left Edge Swipe

Place your finger on the left bezel edge of trackpad (outside the sensitive area). Swipe right into the sensitive area and then lift the finger off the trackpad. This action will toggle the recently used applications. This gesture may be used at any time.

# Customizing Your Trackpad Features in All Models

## Using the GlidePoint Control Center

Your GlidePoint trackpad settings, such as speed or button assignments, may be customized through the GlidePoint Control Center. The GlidePoint Control Center is only available if you have installed the Cirque GlidePoint driver software (see *Installing the Cirque GlidePoint Driver Software* on page 8.)



Figure 6. Windows 8 User Interface

The GlidePoint Control Center can be accessed through the information below:

**Windows 8 and later:** The GlidePoint Control Center tile will appear on the Start screen.

**Windows 7 and older:** Start Button > (All) Programs > GlidePoint > GlidePoint Control Center

**Note:** To access the controls for a Macintosh computer, navigate using the following path: Apple menu > Control Panel > Mouse.

## Through the Windows Control Panel

You can also access it through the Control Panel as displayed in Figure 7. Refer to your Microsoft documentation for information on accessing the Windows Control Panel for your version of Windows.

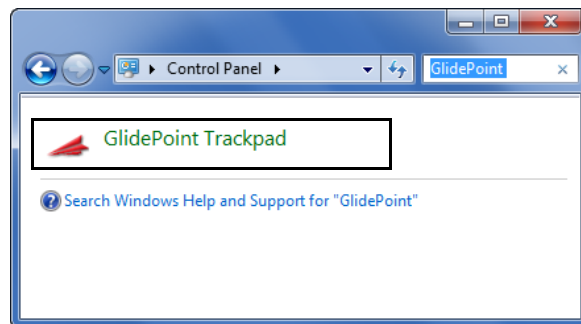


Figure 7. Windows 7 Control Panel

**Note:** Other versions of Windows will have GlidePoint Control Center access in the Control Panel but it will look different.

The Help system in the GlidePoint Control Center contains details and instructions for each option.

# Customer Support Information

---

This section provides methods to diagnose problems you may see, frequently asked questions, and Cirque's Technical Support department contact information.

## Troubleshooting

Your Cirque GlidePoint trackpad should work immediately when connected to your computer. If you have trouble:

- Check that all connections are secured to the correct ports and then restart the computer.
- Check the *Questions and Answers* Web page at [www.cirque.com](http://www.cirque.com).
- Check the following list of frequently asked questions to see if your questions can be easily answered.

Should you need additional help, see *Customer Service Assistance* [on page 18](#).

## Frequently Asked Questions

### What if I cannot find a driver for my serial trackpad?

The current driver does not support a serial connection. The 2.6 version of the driver was the last version that supported a serial connection; it is available on Cirque's [web site](#).

### What if I have trouble tapping or dragging on the trackpad?

A light, quick tap will work best. The trackpad does not require pressure, and hard taps may actually slow performance. If you have difficulties clicking or highlighting by tapping on the trackpad's surface, try using the mechanical buttons.

### What if using the trackpad is causing discomfort in my hand or wrist?

Try the following if you experience discomfort while using your trackpad:

- Try to relax your hand while pointing and tapping. Arching or flexing your hand over the trackpad may cause unnecessary strain.
- Your trackpad responds to the lightest touch, so you can use any finger to point and tap. If you find it uncomfortable to reach toward the device on your desktop, hold it in your other hand or on your lap.

### How can I customize my trackpad settings?

The Cirque GlidePoint Control Center application has many options for customizing and has context-sensitive help.

**Note:** *The Cirque GlidePoint driver must be installed to customize your trackpad features. (See [Installing the Cirque GlidePoint Driver Software](#) [on page 8](#).)*



Follow these steps to customize your trackpad:

1. Open the Cirque GlidePoint Control Center by clicking the GlidePoint Control Center tile on the Start screen in Windows 8 and 8.1. The Control center will then appear.  
For other Windows versions navigate to: **Start > (All) Programs > GlidePoint > GlidePoint Control Center**.
2. Click the appropriate tab that matches the features you want to customize. The Options tab is shown in [Figure 8](#).

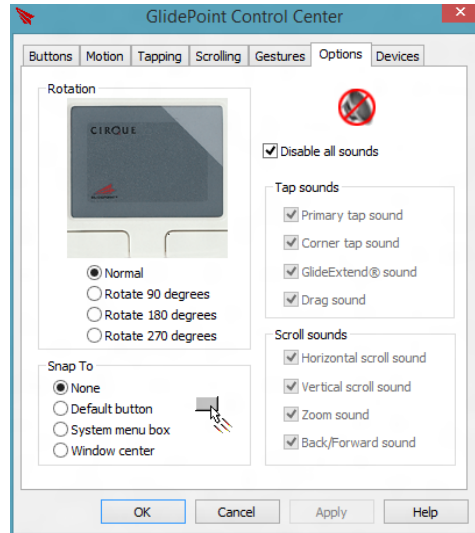


Figure 8. GlidePoint Control Center - Options Tab

3. Click the **Help** button for information on customizing the features on any tab.

## Customer Service Assistance

If you need further assistance or want to learn more about operating your Cirque GlidePoint trackpad, contact Cirque through the following:

- **Web site:** <http://www.cirque.com>
- **E-mail address:** [gp\\_support@cirque.com](mailto:gp_support@cirque.com) (*Please use a return e-mail address.*)
- **Toll-free support line:** 1-800-GLIDE-75 (direct line 801-467-1100)  
Monday through Friday 8:00 am - 4:00 pm MST
- **Fax line:** 801-467-0208

### No Risk 30-Day Trial

We thank you for choosing a Cirque product. We hope you will find that gliding your finger across the trackpad is truly a more natural way to operate your computer. Should you encounter any problems, please contact Cirque, and let us help you. If you are not completely satisfied, our support representatives are ready to help you with your problem. We will do our best to resolve any issue. **Please keep a copy of your dated sales receipt.**

## Contact Information

---

Contact a Cirque sales representative for a complete list of Cirque's OEM products.

<b>In United States &amp; Canada</b>	(800) GLIDE-75 (454-3375)
<b>Outside US &amp; Canada</b>	(801) 467-1100
<b>Fax</b>	(801) 467-0208
<b>Web site</b>	<a href="http://www.cirque.com">http://www.cirque.com</a>

## Part Ordering Information

When ordering parts, please contact your Cirque representative to assist you in selecting the correct size, power, configurations, and overlay that will best meet your trackpad needs.

Table 3. Consumer Trackpad Part Numbers

Trackpad Model	Interface	Color	Part Number
Easy Cat	PS/2	White	GP160P-0311
		Black	GP160P-0321
	USB	White	GP160U-0311
		Black	GP160U-0321
Smart Cat	PS/2	White	GP410P-5011
		Black	GP410P-5021
	USB	White	GP410U-5011
		Black	GP410U-5021
Smart Cat Pro	PS/2	White	GP415P-5311
		Black	GP415P-5321
	USB	White	GP415U-5311
		Black	GP415U-5321

## Product Warranty Information

Cirque GlidePoint® trackpads are warranted to be free from failure due to defects in material and workmanship for three (3) years after the original date of purchase. Warranty is offered to original purchaser only. Please retain your proof of purchase, which will be required for future warranty claims.

For three (3) years from the date of purchase, Cirque will, at its sole option, replace or repair at no charge the product, which, in its opinion, is defective.

If a defective product has been modified or altered in any way, the plastic enclosure has been opened, or the failure is the result of misuse, abuse, accident, or misapplication, Cirque has no obligation to repair or replace the product.

Customer is responsible for packaging and freight to ship a defective product to Cirque. Cirque is responsible for charges to ship the repaired or replacement product. In the case of charges for which customer is liable, the replacement product will be sent C.O.D. Customer must obtain a Return Merchandise Authorization (RMA) number from Cirque's Customer Service department at 801-467-1100. This RMA number should be displayed prominently on the outside of the

returned package and on the accompanying package list. Cirque is not responsible for packages returned without an RMA number. Warranty claims may not be honored without proof of purchase.

THE WARRANTIES OUTLINED IN THIS AGREEMENT REPLACE ALL OTHER WARRANTIES. CIRQUE EXPRESSLY DISCLAIMS ALL OTHER WARRANTIES, INCLUDING BUT NOT LIMITED TO THE IMPLIED WARRANTIES OF MERCHANTABILITY AND FITNESS FOR A PARTICULAR PURPOSE AND NONINFRINGEMENT OF THIRD-PARTY RIGHTS WITH RESPECT TO THE DOCUMENTATION, SOFTWARE AND HARDWARE. NO CIRQUE DEALER, AGENT OR EMPLOYEE IS AUTHORIZED TO MAKE ANY MODIFICATION, EXTENSION OR SUBSTITUTION PRODUCTS OR SERVICES.

IN NO EVENT SHALL CIRQUE BE LIABLE FOR LOST PROFITS, LOSS OF INFORMATION OR DATA, OR ANY OTHER DIRECT, SPECIAL, INDIRECT, CONSEQUENTIAL, OR INCIDENTAL DAMAGES ARISING IN ANY WAY OUT OF THE SALE OF, USE OF, OR INABILITY TO USE ANY CIRQUE PRODUCT OR SERVICE, EVEN IF CIRQUE HAS BEEN ADVISED OF THE POSSIBILITY OF SUCH DAMAGE. IN NO CASE SHALL CIRQUE'S LIABILITY EXCEED THE ACTUAL MONEY PAID FOR THE PRODUCTS AT ISSUE.

### **FCC Regulatory Notice**

This device complies with Part 15 of the FCC Rules. Operation is subject to the following two conditions: (1) this device may not cause harmful interference, and (2) this device must accept any interference received, including interference that may cause undesired operation.

Warning: Changes or modifications to this unit not expressly approved by the party responsible for compliance could void the user's authority to operate this equipment.

Note: This equipment has been tested and found to comply with the limits for a class B digital device, pursuant to Part 15 of the FCC Rules. These limits are designed to provide reasonable protection against harmful interference in a residential installation. This equipment generates, uses, and can radiate frequency energy, and, if not installed and used in accordance with the instructions, may cause harmful interference to radio communications. However, there is no guarantee that interference will not occur in a particular installation. If this equipment does cause harmful interference to radio or television reception, which can be determined by turning equipment off and on, the user is encouraged to try to correct the interference by one or more of the following measures:

- Reorient or relocate the receiving antenna.
- Increase the space between the equipment and receiver.
- Connect the equipment into an outlet on a circuit different from that to which the receiver is connected.